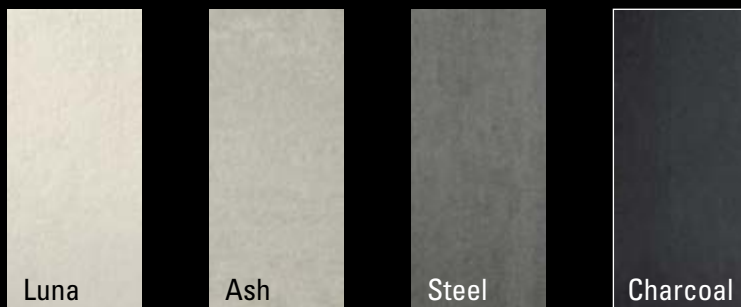




**COMSPEX DOUBLE PRESSED THROUGH BODY PORCELAIN – RECTIFIED**



**RETAIL PRICING LISTED**

	PRE-CONSUMER: 15%	
	Stocked Sizes	Price /sf
12"x 24" Matte	\$7.95	\$15.90
2"x 2" Mosaics Matte	\$18.95	\$18.95

For more info, visit: [www.amestile.com/comspex](http://www.amestile.com/comspex)

Combining the essence of performance and design, this extensive series has multiple colours and versatile sizes suitable for all types of projects.

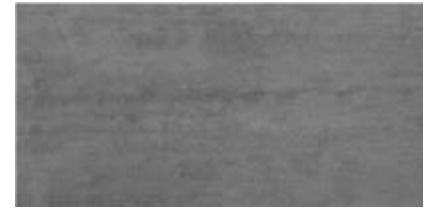
# COMSPEX SERIES



Luna



Ash



Steel



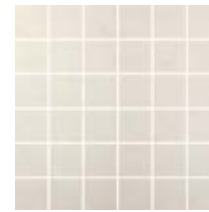
Charcoal

12" x 12" mesh sheet

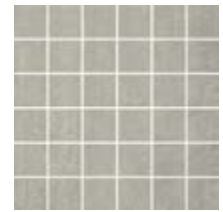


	12" x 24" Matte	2" x 2" Mosaics Matte
\$ / sf	\$7.95	\$18.95
\$ / ea	\$15.90	\$18.95
<b>ASH</b>	CSMA1224	CSMAM2
<b>CHARCOAL</b>	CSMC1224	CSMCM2
<b>LUNA</b>	CSML1224	CSMLM2
<b>STEEL</b>	CSMS1224	CSMSM2

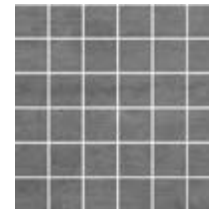
Alternate sizes, textures, décor and trim pieces may also be available for special order. Contact your sales consultant for more information.



Luna



Ash



Steel



Charcoal

## RECOMMENDED APPLICATIONS

Matte		Shower	Steam Shower	Fireplace / Feature Wall	Light Commercial	Medium Commercial	Heavy Commercial	Indoor	Outdoor
	WALL	✓	✓	✓	✓	✓	✓	✓	✓
FLOOR	✓	✓	✓	✓	✓	✓	✓	✓	✓

## TECHNICAL SPECIFICATIONS

V Rating (Variation)	Breaking Strength (ISO 10545-4)	Resistance to Deep Abrasion (ISO 10545-6)	Slip Resistance	Frost Resistance (ISO 10545-12)	Country of Origin	Ecotile
V2 - Slight Variation	≥1300 N	132 mm <sup>3</sup>	DCOF ≥0.42 (Matte)	Yes	China	Yes
Number of Faces	Thickness	Resistance to Surface Abrasion (ISO 10545-7)	Moisture Rating (MR)	MOHS (Hardness Scale)	PEI (Wear Resistance)	Recycled Content
—	3/8" or 10mm	—	1 - Impervious	7	—	Pre-Consumer 15%

All images are for reference only and may not match physical product exactly. All product specifications are supplied by the manufacturer and are subject to change by the manufacturer without notice to you or to Ames Tile & Stone Ltd. Ames makes no representations or warranties as to the specifications of any product. Prices are subject to change without notice; please contact your Ames Sales Consultant for current prices.



Inspire. Design. Create.  
[www.amestile.com/comsplex](http://www.amestile.com/comsplex)

Shading and variation is inherent in ceramics and natural stone. Please inspect before installing, no claims accepted after installation.