

INSTALLATION REQUIREMENTS

1. GENERAL INFORMATION

- 1.1 - **TITAN 5.5** is an engineered Stone Polymer Core composite floating floor, suitable for interior floor surfaces above, on, or below grade.
- 1.2 - **TITAN 5.5** has a UV cured, ceramic bead reinforced wear layer and is suited for residential environments.
- 1.3 - **TITAN 5.5** is FloorScore® Certified meeting all indoor air quality requirements, and manufactured in compliance with ASTM F3261 standards.
- 1.4 - **TITAN 5.5** is an engineered flooring that features the patented UNICLIC Drop Lock installation system. **TITAN's** dual-installation technology can be installed as a floating floor or a direct glue down. With either installation method, attention must be given to load limits and high point loads. When installed as a floating floor, the planks cannot be nailed or bonded to the substrate. Floating floors should never be nailed, screwed, or glued to the substrate. **TITAN 5.5** is not recommended for applications subjected to heavy rolling loads. In those applications, **VYTEC™ ENERGY 2.5** is recommended.
- 1.5 - **TITAN 5.5** has an attached acoustic pad that exceeds most demanding acoustic requirements where sound transmission is a concern.
- 1.6 - **TITAN 5.5** can be installed over hydronic or electric in-floor heating systems approved for SPC flooring. Maximum temperature must not exceed 28 °C (82 °F). In-floor heating must be covered with a minimum 25 mm (1") of concrete.
- 1.7 - Exposure to direct sunlight can create excessive heat and cause damage to flooring and other interior finishes. During peak sunlight exposure, window coverings are required.

2. DELIVERY, STORAGE & ACCLIMATION

- 2.1 - Material shall not be delivered until the site is climate controlled and within required tolerances (listed below), unless an appropriate climate-controlled storage area is provided.
- 2.2 - All flooring and related materials shall be conditioned or acclimated within the area of installation and be adequately protected from soil, dust, moisture and other contaminants during this time. The conditioning shall be for 72 hours before installation or until the materials reach the required temperature of the installation area.
- 2.3 - The flooring should be acclimated to service conditions per NFCA guidelines. The ambient temperature should be maintained between 18°C – 28°C (65°F – 82°F) and subfloor temperature should be between 15°C – 24°C (60°F – 75°F). Relative Humidity shall be between 40% – 60%.
- 2.4 - Cartons should be stored on a smooth, flat, sturdy horizontal surface. Do not store cartons on end. It is recommended that cartons not be stacked more than 4 high during acclimation. Do not store cartons outside.

INSTALLATION REQUIREMENTS

3. SITE CONDITIONS

- 3.1 - Flooring installation shall not commence until the building is enclosed.
- 3.2 - Substrates must be structurally sound, clean, dry, smooth, and flat to within a tolerance of 3 mm (1/8") in 3 m (10').
- 3.3 - Concrete substrates must have an effective moisture barrier present under concrete.
- 3.4 - Wooden substrates must be free from deflection and conform to building code requirements.
- 3.5 - **TITAN 5.5** can be installed over existing cement, terrazzo, wood, ceramic, and single-layer non-cushioned resilient flooring. The existing flooring must be sound, solid, well-adhered, and free of any wax or any other substances. Any cuts, gouges, dents, grout joints or irregularities in the existing flooring must be repaired to match the requirements noted above.
- 3.6 - All substrate defects likely to impair finished work must be corrected before installation. Cementitious patching compounds are recommended to repair substrate defects. Please follow patch manufacturer recommendations.
- 3.7 - **TITAN 5.5** can be installed over hydronic or electric in-floor heating systems approved for SPC flooring. Maximum temperature must not exceed 28 °C (82 °F). In-floor heating must be covered with a minimum 25 mm (1") of concrete.
- 3.8 - It is the responsibility of the installer / owner to inspect all materials carefully before installation, and to determine if the substrate and jobsite conditions are acceptable for floor installation. The manufacturer is not responsible for floor failure resulting from improper installation or substrate deficiencies, jobsite damage, or any visible defects after the floor has been installed.

4. FLOATING FLOOR INSTALLATION

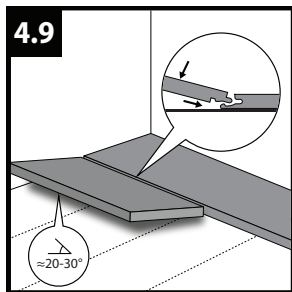
- 4.1 - **TITAN 5.5** can be cut with a fine-tooth multipurpose saw blade, guillotine cutter, or scored with a utility knife.
- 4.2 - Planks should be taken from several boxes to ensure a blend of color and design. All planks should be taken from the same dye lot.
- 4.3 - Inspect all planks before installation. Planks with visible flaws should be culled. If possible, culled pieces may be used as starting or finishing pieces, once flaws have been cut away. Ensure all joints and edges of the UNICLIC Drop Locking system are free from damage and debris.
- 4.4 - A transition allowing a 5.5 mm (1/4") gap must be in place when installations are greater than 15 m (50') in any direction.
- 4.5 - It is recommended that the flooring is installed parallel to the longest wall. Use a chalk line as a guide to ensure the first row is straight.
- 4.6 - Maintain a 5.5 mm (1/4") gap at all vertical and fixed objects. The use of spacers is recommended to prevent movement during installation.

INSTALLATION REQUIREMENTS

4. FLOATING FLOOR INSTALLATION

4.7 - Measure the row before laying the first plank. The cut planks should not be less than 200 mm (8"). If less than 200 mm (8"), trim the starting plank as necessary. Ensure end joints of planks are a minimum of 200 mm (8") apart from adjacent rows.

4.8 - Install the first row by laying the first panel in the left-hand corner of the room, with the tongue facing the starting wall, allowing a 5.5 mm (1/4") gap between the plank and all vertical fixed objects. Lock the second plank into place at the short end joint. Continue laying planks together until the row is completed. Cut the last row to length, ensuring expansion space is maintained.



4.9 - Cut first plank of second row to length. Engage the long joint by placing the tongue of the second-row plank into the groove of the first row, by engaging and lowering into place. The second row should be engaged at an angle between 20° - 30°. When properly engaged, the long joint and plank will lay flat. If not aligned properly, the locking mechanism will not engage. Ensure there is no damage or debris preventing proper alignment.

***DO NOT use a hammer or tapping block to install the planks.**

4.10 - Line up the next full plank and engage the long joint while gently folding the short joint into place. When engaged properly, the joints will be flush with adjacent rows. Do not use a tapping block.

4.11 - Continue installing planks following the same technique, cutting the last plank of each row to size, maintaining the 5.5 mm (1/4") gap at all fixed vertical objects.

4.12 - Trim the final row to size, scribing the planks to the wall as necessary, while maintaining the 5.5 mm (1/4") expansion gap.

4.13 - For rows that need to be trimmed down to 50 mm (2") or less, it is recommended to use a small bead of adhesive in the joints. Use a clear, non-expanding adhesive approved for SPC. Contact your distributor for further details on appropriate adhesives.

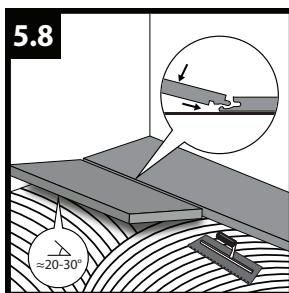
4.14 - Door jambs and casings must be under cut to allow 5.5 mm (1/4") expansion space. Transitions are recommended at all doorways, transitions must allow a 5.5 mm (1/4") gap to accommodate the floating floor system. Attach transitions directly to the subfloor, not the installed planks, as this could compromise the floating floor system, resulting in installation failure.

4.15 - Thoroughly clean the area and check the installed floor for any damage or defects, replace any planks as necessary. Remove all spacers and install baseboards.

INSTALLATION REQUIREMENTS

5. GLUE DOWN INSTALLATION

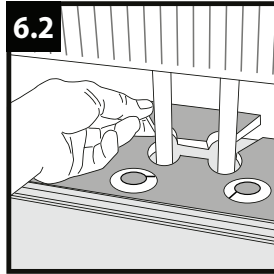
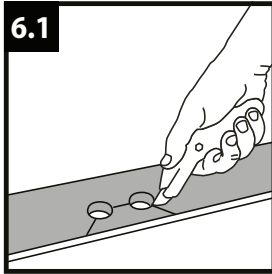
- 5.1 -** Planks should be taken from several boxes to ensure a blend of color and design. Carefully check all planks for any defects. Ensure that you have the correct material and that all the cartons are from the same production lot. Do not install any planks from different production lots. No claims will be accepted for material that has been installed with visual defects. Prior to installation: Ensure all subfloor surfaces conform to requirements for flatness, temperature, moisture, and contaminant removal.
- 5.2 -** It is recommended that the flooring is installed parallel to the longest wall. Use a chalk line as a guide to ensure the first row is straight.
- 5.3 -** Use a full-spread, premium adhesive for the installation of vinyl planks. Use the notched trowel recommended by the adhesive manufacturer to achieve full transfer of the adhesive to the backing of the floor covering. Work in small enough area to ensure that the planks are laid into the adhesive according to the adhesive manufacturer installation methods.
- 5.4 -** Apply adhesive with a 1/16" square notch trowel, or equivalent as recommended by the adhesive manufacturer to achieve full transfer of adhesive to the backing of the floor covering. Work in small enough area to ensure that the planks are laid into the adhesive according to the adhesive manufacturer installation methods.
- 5.5 -** Position the plank in the adhesive without sliding and pressing firmly down, paying special attention to the edges and corners.
- 5.6 -** Inspect all panels before installation. Panels with visible flaws should be culled. If possible, culled pieces may be used as starting or finishing pieces, once flaws have been cut away. Ensure all joints and edges of the UNICLIC Drop Lock installation system are free from damage and debris.
- 5.7 -** Install the first panel in the left-hand corner of the room, with the tongue facing the starting wall. Lock the second plank into place at the short end. Continue laying planks together until the row is completed. Cut the last plank to length.



- 5.8 -** Please refer to subheading 4. "FLOATING FLOOR INSTALLATION" point 4.1 to 4.15 on how to engage the locking system.
- 5.9 -** For the best visual effect, always stagger the planks from row to row with a minimum 200 mm (8") offset, installing the planks in a random pattern.
- 5.10 -** Periodically check by lifting a plank to ensure full transfer of the adhesive to the backing of the floor covering.
- 5.11 -** Immediately after installing the flooring, roll each section in both directions with a minimum 45 kg (100 lbs) roller, following the adhesive manufacturer installation recommendations; re-roll the entire area after one hour. Promptly remove adhesive smudges with a clean cloth dampened with water while adhesive is still fresh and mineral spirits when dried.
- 5.12 -** Ensure that the flooring is free from general traffic for 24 hours after installation.

INSTALLATION REQUIREMENTS

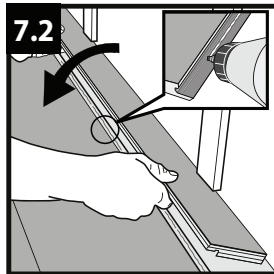
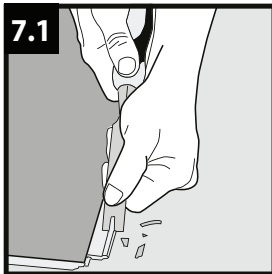
6. INSTALLATION AROUND RADIATOR/HEATING PIPES



6.1 - Drill holes 5.5 mm (1/4") larger than the diameter of the pipes. Cut and remove piece as shown in figure 6.1.

6.2 - Put the panel on one side of the pipes and the removed piece on the other side.

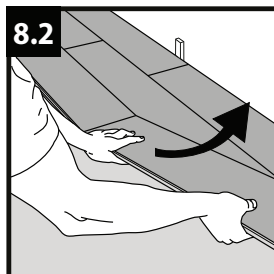
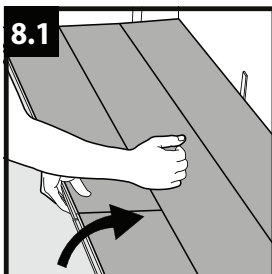
7. WHEN INSTALLING AT AN ANGLE IS NOT POSSIBLE



7.1 - Remove the vertical locking part of the strip with a chisel.

7.2 - Apply applicable glue on the strip and push the panels horizontally together. Place some spacers between last board and the wall.

8. DISMANTLING PANELS



8.1 - Separate the whole row by carefully lifting up and release the whole row. Fold up the row and release the whole long side.

8.2 - Disassemble the panels by lifting the short ends upwards. Never fold up a panel, as this damage the profile.

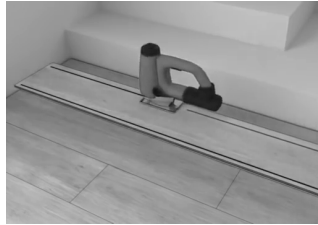
INSTALLATION REQUIREMENTS

9. CARE & MAINTENANCE

- 9.1 -** TITAN 5.5 has a UV-cured ceramic bead polyurethane finish and does not require additional coatings or waxes.
- 9.2 -** Exposure to direct sunlight can create excessive heat and can damage flooring and other interior finishes. During peak sunlight exposure, window coverings are recommended.
- 9.3 -** Support furniture with wide-bearing, non-staining floor protectors. Ideally, the protectors should be at least 25 mm (1") wide, made of non-pigmented plastic or felt, and rest flat on the floor. Urethane or neoprene casters, felt pads, or floor protectors are recommended for all movable furniture. Use protection mats under chairs with casters.
- 9.4 -** Use plywood or other protective material to cover flooring when moving heavy furniture or appliances into position.
- 9.5 -** Use walk-off mats at all room entrances to prevent dirt, sand, grit and other damaging substances from being tracked onto the floor. Use non-staining mats. Do not use rubber or latex backed mats.
- 9.6 -** For regular cleaning, sweep, or vacuum using a hardwood attachment. Do not use a vacuum with a beater bar. Damp mop floors using a PH neutral cleaning solution. Follow the manufacturers directions for using PH neutral cleaners.
- 9.7 -** Wipe up spills quickly. Do not allow standing water to permeate through to the subfloor.
- 9.8 -** For heavily soiled floors, use a neutral cleaner and scrub with a red pad or microfiber cloth. Rinse the pad / cloth frequently.
- 9.9 -** For additional maintenance information, please contact your distributor.

STAIR NOSE INSTALLATION REQUIREMENTS

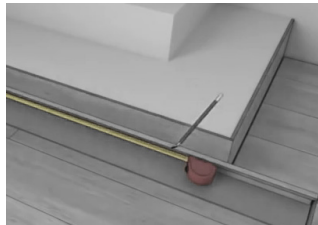
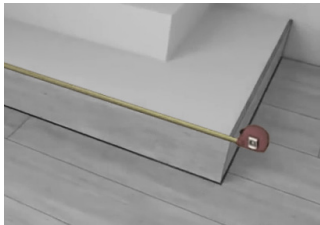
1. Prepare existing stair treads. Remove any existing flooring, underlayment and staples. If necessary, trim existing stair nosing flush with the riser.



2. Measure length and height of riser. Cut new riser material to fit.



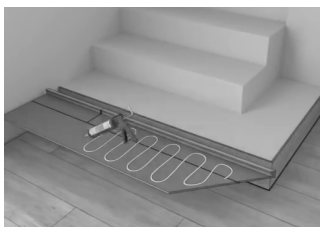
3. After confirming size, apply approved adhesive to the back of the riser material and bond to the existing riser.



4. Measure the width of the stair at the front of the riser. Mark and cut new stair nosing to fit.



5. Measure and cut plank to fit the stair tread. Ensure proper fit by placing plank into stair nosing.



6. After ensuring proper fit, apply approved adhesive to stair nose, plank and tread, ensure there is good contact and transfer of adhesive.

Prevent foot traffic until adhesive has cured.