



**2 CM THICK TILE THROUGH BODY PORCELAIN PAVERS**

**BASALTINA**



\*Ivory



Slate Grey



Granite



Graphite

\*6-8 weeks delivery time. Please contact an Ames Consultant for more information.

**TRAVERTINE**



Crema



Light

**SLATE**



Slate

**SANDSTONE**



Graphite

**WHY USE 2CM THICK PORCELAIN TILE?**

- No need to seal
- High abrasion and stain resistance
- Withstand extreme temperature changes (-50°C to +60°C)
- Durable — with high breaking points and wear resistance
- Less than 10lbs per sq. ft. — ideal for rooftop applications
- No efflorescence
- Always “true to size” resulting in quick and easy installation
- High COF — good for traffic areas with slip concern

**RETAIL PRICING LISTED**

| Stocked Size | Price /sf | Price /pc |
|--------------|-----------|-----------|
| 24" x 24"    | \$14.95   | \$59.80   |

For more info, visit:  
[www.amestile.com/landstone2cm](http://www.amestile.com/landstone2cm)

Combining the essence of stone pavers with the performance and versatility of porcelain.

# LANDSTONE 2 CM SERIES



|       |           |
|-------|-----------|
|       | 24" x 24" |
| \$/sf | \$14.95   |
| \$/pc | \$59.80   |

## BASALTINA

|            |       |
|------------|-------|
| GRANITE    | BST02 |
| GRAPHITE   | BST01 |
| *IVORY     | BST04 |
| SLATE GREY | BST03 |

## SANDSTONE

|          |       |
|----------|-------|
| GRAPHITE | SDS01 |
|----------|-------|

## SLATE

|       |         |
|-------|---------|
| SLATE | SLT015G |
|-------|---------|

## TRAVERTINE

|       |       |
|-------|-------|
| CREMA | TRV01 |
| LIGHT | TRV02 |

Alternate sizes, textures, décor and trim pieces may also be available for special order. Contact your sales consultant for more information.

\*6-8 weeks delivery time. Please contact an Ames Consultant for more information.

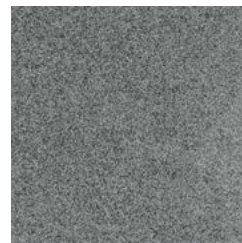
## BASALTINA



\*Ivory



Slate Grey



Granite



Graphite

## TRAVERTINE



Crema



Light



Slate



Graphite

## THICK TILE OPPORTUNITIES

- Patios • Sidewalks • Balconies • Pool decks • Courtyards • Roof tops • Building façades • Driveways • Wineries • Sports arenas

## RECOMMENDED APPLICATIONS

|           |       | Shower | Steam Shower | Fireplace / Feature Wall | Light Commercial | Medium Commercial | Heavy Commercial | Indoor | Outdoor |
|-----------|-------|--------|--------------|--------------------------|------------------|-------------------|------------------|--------|---------|
| 24" x 24" | WALL  | ✓      | ✓            | ✓                        | ✓                | ✓                 | ✓                | ✓      | ✓       |
|           | FLOOR | ✓      | ✓            | ✓                        | ✓                | ✓                 | ✓                | ✓      | ✓       |

## TECHNICAL SPECIFICATIONS

| V Rating (Variation)                 | Breaking Strength (ISO 10545-4) | Resistance to Deep Abrasion (ISO 10545-6)    | Slip Resistance      | Frost Resistance (ISO 10545-12) | Country of Origin     | Ecotile          |
|--------------------------------------|---------------------------------|--|----------------------|---------------------------------|-----------------------|------------------|
| V2-V3 – Slight to Moderate Variation | > 8000 N                        | 145 mm <sup>3</sup>                          | DCOF >0.42           | Yes                             | China                 | No               |
| Number of Faces                      | Thickness                       | Resistance to Surface Abrasion (ISO 10545-7) | Moisture Rating (MR) | MOHS (Hardness Scale)           | PEI (Wear Resistance) | Recycled Content |
| —                                    | 3/4" or 20mm                    | —  | 1 - Impervious       | —                               | —                     | 0%               |

All images are for reference only and may not match physical product exactly. All sizing is nominal and all product specifications are supplied by the manufacturer and are subject to change by the manufacturer without notice to you or to Ames Tile & Stone Ltd. Ames makes no representations or warranties as to the specifications of any product. Prices are subject to change without notice; please contact your Ames Sales Consultant for current prices.



Inspire. Design. Create.

[www.amestile.com/landstone2cm](http://www.amestile.com/landstone2cm)

Shading and variation is inherent in ceramics and natural stone. Please inspect before installing, no claims accepted after installation.