



**CHALK THROUGH BODY PORCELAIN | MATTE**



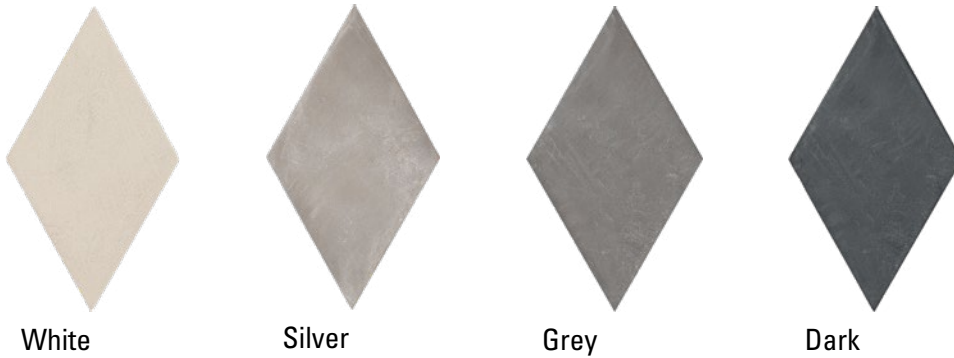
**RETAIL PRICING LISTED**

		PRE-CONSUMER: 30% GREY + 50% DARK	
Stocked Sizes	Price /sf	Price /pc	
8" x 8"	\$9.95	\$4.42	
3" x 12"	\$11.96	\$2.99	
Rhomboid (7" x 13")	\$14.94	\$4.98	

For more info, visit: [www.amestile.com/chalk](http://www.amestile.com/chalk)

The Chalk series combines the modern look of concrete with the fun rhomboid shape and pastel colours to create a multitude of creative patterns and designs.

# CHALK SERIES



	8" x 8"	3" x 12"	Rhomboid 7" x 13"
\$ / sf	\$9.95	\$11.96	\$14.94
\$ / ea	\$4.42	\$2.99	\$4.98
<b>DARK</b>	CHDA8	CHDA312	CHDAR713
<b>GREY</b>	CHGR8	CHGR312	CHGRR713
<b>SILVER</b>	CHSV8	CHSV312	CHSVR713
<b>WHITE</b>	CHWH8	CHWH312	CHWHR713

Alternate sizes, textures, décor and trim pieces may also be available for special order. Contact your sales consultant for more information.



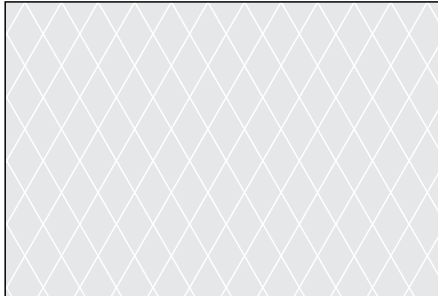
RECOMMENDED APPLICATIONS									
All Sizes		Shower	Steam Shower	Fireplace / Feature Wall	Light Commercial	Medium Commercial	Heavy Commercial	Indoor	Outdoor
		WALL	✓	✓	✓	✓	✓	✓	✓
	FLOOR	✓	✓	✓	✓	✓	✓	✓	✓

Recommended applications do not include consideration of any technical installation requirements or safety standards for slopes and pool decks. All tile products and setting materials should be selected and installed in compliance with manufacturers specifications and applicable use standards.

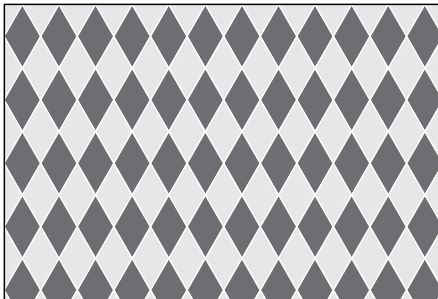
**Caution: Dark grout on light coloured tiles can scratch or stain the surface, please test a separate area before grouting your space.**

TECHNICAL SPECIFICATIONS						
V Rating (Variation)	Breaking Strength (ISO 10545-4)	Resistance to Deep Abrasion (ISO 10545-6)	Slip Resistance	Frost Resistance (ISO 10545-12)	Country of Origin	Ecotile
V2 - Slight Variation	≥ 1800 N	≤ 150 mm <sup>3</sup>	DCOF >0.55	Yes	Italy	Yes
Number of Faces	Thickness	Resistance to Surface Abrasion (ISO 10545-7)	Moisture Rating (MR)	MOHS (Hardness Scale)	PEI (Wear Resistance)	Recycled Content
3" x 12" - 17 8" x 8" / Rhomboid - 30	8.5 mm (Rhomboid) 9mm (8" x 8", 3" x 12")	—	1 - Impervious	—	—	PRE-CONSUMER: 30% GREY + 50% DARK

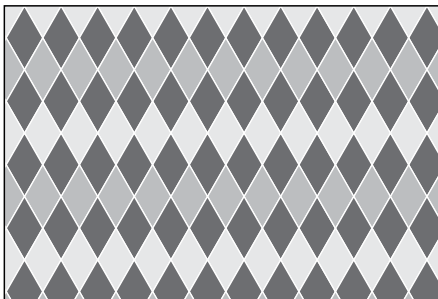
All images are for reference only and may not match physical product exactly. All sizing is nominal and all product specifications are supplied by the manufacturer and are subject to change by the manufacturer without notice to you or to Ames Tile & Stone Ltd. Ames makes no representations or warranties as to the specifications of any product. Prices are subject to change without notice; please contact your Ames Sales Consultant for current prices.



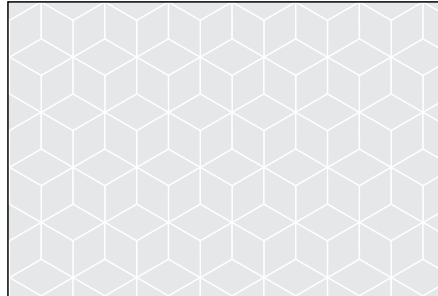
◇ 100%



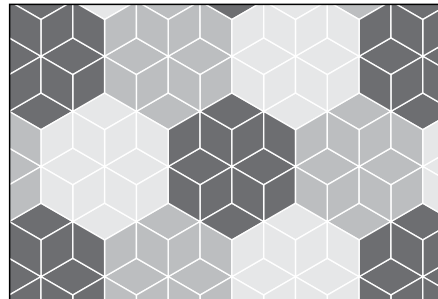
◇ 50%    ◆ 50%



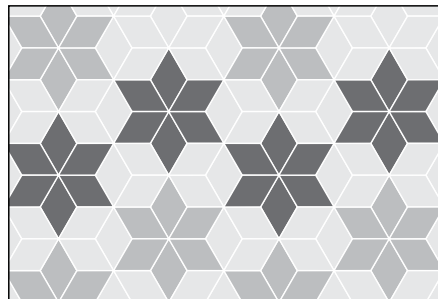
◇ 25%    ◆ 25%    ◆ 50%



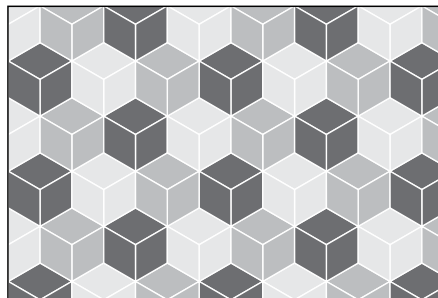
◇ 100%



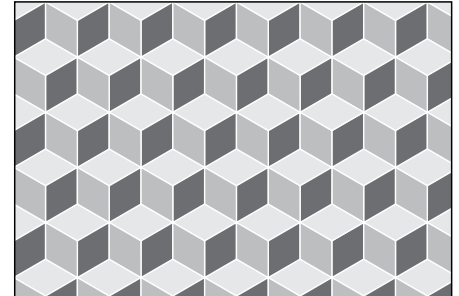
◇ 33,3%    ◆ 33,3%    ◆ 33,3%



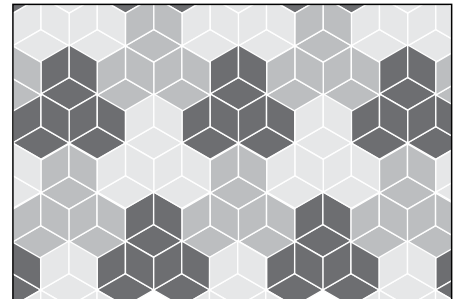
◇ 45%    ◆ 32%    ◆ 23%



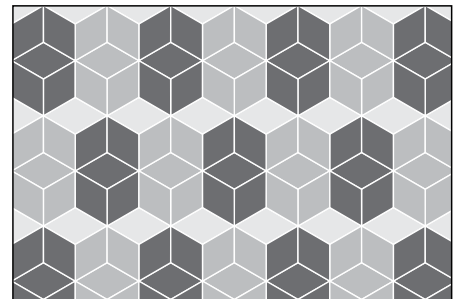
◇ 33,3%    ◆ 33,3%    ◆ 33,3%



◇ 33,3%    ◆ 33,3%    ◆ 33,3%

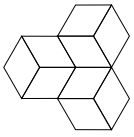


◇ 33,3%    ◆ 33,3%    ◆ 33,3%

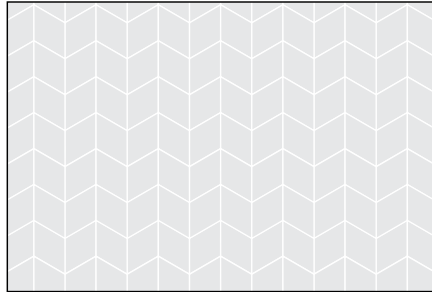


◇ 10%    ◆ 45%    ◆ 45%

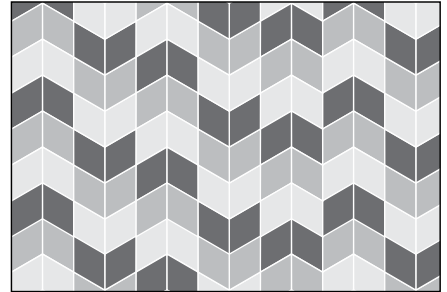
# CHALK SERIES PATTERNS



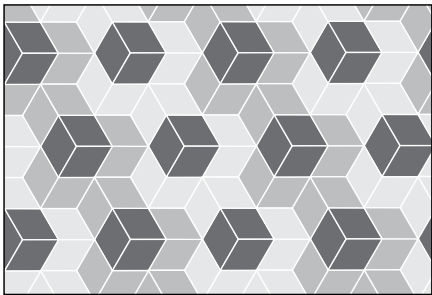
◇ 100%



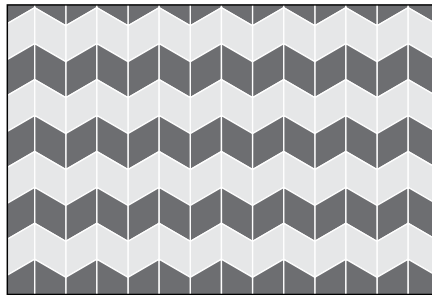
◇ 100%



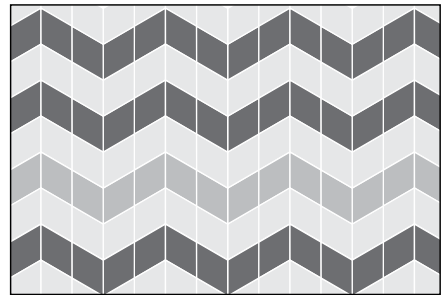
◇ 33,3% ◇ 33,3% ◆ 33,3%



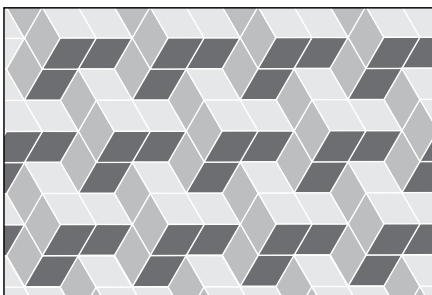
◇ 33,3% ◇ 33,3% ◆ 33,3%



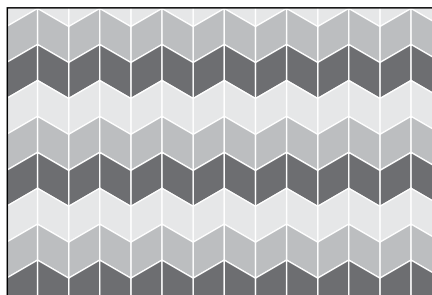
◇ 50% ◆ 50%



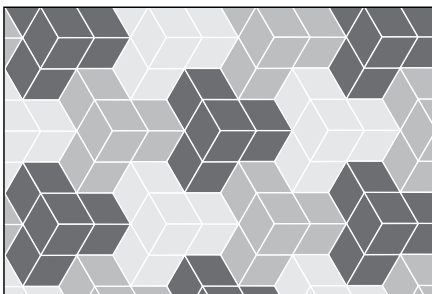
◇ 50% ◇ 17% ◆ 33%



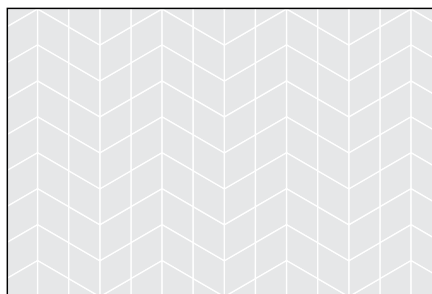
◇ 33,3% ◇ 33,3% ◆ 33,3%



◇ 33,3% ◇ 33,3% ◆ 33,3%



◇ 33,3% ◇ 33,3% ◆ 33,3%



◇ 100%